

ROCKY MOUNTAIN RAIL REPORT



NOVEMBER 2003

No. 530

ROCKY MOUNTAIN RAILROAD CLUB • ROCKY MOUNTAIN RAILROAD HISTORICAL FOUNDATION

Video Potpourri Night

Presented by Steve Mason

November 11, 2003 • 7:30 PM

Please bring your VHS format video clips for the video potpourri. They should be set at the starting point and no longer than 10 to 12 minutes on any railroad subject you would like us to see. This has always been an interesting evening by members for members. Videos will be returned at the end of the evening.

Please come join us for an enjoyable, educational evening at Christ Episcopal Church at 2950 South University Boulevard, University at Bates, where there is plenty of off street parking at the rear of the complex. Enter into Barnes Hall, where we hold the monthly meetings, on the mid-south side doors. Please bring a guest. **All programs are intended to provide an educational experience on railroading. The general public is welcome to attend. There is no charge for this meeting.**

Membership Renewals and Equipment Fund Book Drawing

Watch your mail for your membership dues renewal form. Membership renewals for 2004 are due no later than January 1, 2004. Please consider upgrading your membership to one of the new membership levels to provide additional financial support to the Club.

Also included with the renewal notice are coupons for the annual book/video drawing. Drawing tickets are \$2.00 each and the funds raised benefits our equipment fund, which is used to care for the Club's equipment on display at the Colorado Railroad Museum.

Last year, Jackson C. Thode's book *A Century of Passenger Trains ... and then Some*, Bob Griswold's *Denver Northwestern and Pacific - The Moffat Road and Denver and Salt Lake Railroad 1913-1926* also by Bob Griswold were given away.

Notice Of Annual Meetings

The annual meeting of the Rocky Mountain Railroad Club (Club) and the Rocky Mountain Railroad Historical Foundation (Foundation) will be held on Tuesday, December 9, 2003, at 7:30 PM at Christ Episcopal Church, 2950 South University Boulevard, Denver, Colorado. These meetings are called for the purpose of electing Officers and Directors of the

Rocky Mountain Railroad Club, who will also serve as Trustees of the Foundation. The Rocky Mountain Railroad Historical Foundation shall elect additional Trustees as required by the Foundation bylaws. At these meetings the Club or Foundation may conduct any other business as may properly come before these meetings.

2003 RMRRC Events Schedule

December 9 Meeting: Blizzard of '49

2004 RMRRC Events Schedule

January 13 Meeting: La Veta Pass

February 10 Meeting: F&CC Terminals

February 14 Trip: Amtrak to
Glenwood Springs

March 9 Meeting: Fun With Private
Cars

April 13 Meeting: Erie-Lackawanna
East End

May 11 Meeting: Slide Potpourri

June 8 Meeting: To Be Announced

July 13 Meeting: To Be Announced

August 10 Meeting: To Be Announced

September 14 Meeting: To Be Announced

October Event: Annual Banquet

November 9 Meeting: Video Potpourri

December 14 Meeting: To Be Announced

The deadline for items to be included in the December *Rail Report* is 11/13/03.

Submit articles and digital photos (72 dpi) for the Club website to Wally Weart, Webmaster, at wlg@nilenet.com

Out at the Museum

By Denny Haeefe

Saturday, September 13, was a crummy day, rainy and cold. I slept in and worked on inside stuff at home.

On Saturday, September 27, I arrived at the museum a little after 9:00 AM to find Russ and Sue Stuska already busy tidying up in the Rico. The lumber that had been stacked on the floor was now nailed up on the clerestory. Access to most of the floor had been difficult but was now a lot easier. Sue and Russ had already cleaned up the debris left from the work weekend and started in chipping away nearly 1/16 inch of old paint from the west door of the car.

I found a can of black paint and started painting the sand and steam domes on the 20. Much of the locomotive has been sporting a primer color since the work weekend. It has had a leopard look about it with brown, black and silver spots. Soon the top half took on a new appearance as the gloss black paint covered up the spots.

Roger Sherman appeared on the job site dressed for painting. Good thing! He was soon applying paint to the headlight frame and to the pilot beam. Russ and Sue couldn't resist the fun of playing in the paint and were soon busy painting the spokes of the wheels and the springs and

hangers. It should be noted that painting the wheels and springs is tedious work and is best done by someone with infinite patience. Also, it means you are working below someone with a 4-inch brush full of black paint. Umbrella? Rain slicker? Might have been a good idea. Sorry about the dots on your hat.

Lunch time rolled around and Sue and Russ took a break on-site to eat lunch. With the paint supply exhausted, Roger and Denny went to town for supplies and a bite to eat. After being rested and fed, the crew started back to work. By the end of the day all the black on the locomotive was done. The Stuska's had also painted the trucks under the tender.

In October, the first work session fell on the same date that "Thomas the Tank Engine" made another appearance in Golden. Many of the volunteers who would normally be working on equipment both for the Club and the museum were busy instead helping enthusiastic young rail fans and their parents find their way around. The museum, for the second time in as many years, transformed itself into the "Island of Sodor," home for Thomas and his friends.

It's Almost Club Election Time

Nominations are still being accepted by your nominations committee. The door is still wide open for those who wish to serve our rail fan community as an officer or board member for the Rocky Mountain Railroad Club. The committee will close the door on nominations with the last video at our normal Club meeting, November 11, 2003.

The nominee must be a member in good standing with the Club and have a desire to preserve the history of rail in Colorado by leading our Club in fun and exciting activities. It is desirable that a nominee has access to e-mail and the Internet but it is not essential.

Candidates for office will be listed in the

December issue of the *Rail Report*. The election will take place on December 9.

The nominations committee this year is Michael Tinetti, Richard Price, and Ken Gow. Please submit your candidates for office to any of these gentlemen. You can contact Mike who sells the raffle tickets at the monthly meetings. You may also contact members of the nominations committee at the following e-mail or leave a message for Mike at 303-794-5867.

Michael Tinetti (mtinetti9@earthlink.net)

Ken Gow (ken_gow@hotmail.com)

Richard Price (frostybeeb@earthlink.net)

Publishers Statement

Rocky Mountain Rail Report

The Rocky Mountain Rail Report (ISSN 1040-9223) is published by the Rocky Mountain Railroad Club and the Rocky Mountain Railroad Historical Foundation. First class postage paid at Denver, Colorado. Postmaster: Send address changes to the Rocky Mountain Rail Report, PO Box 2391, Denver, CO 80201-2391

Club Information

Rocky Mountain Railroad Club
PO Box 2391
Denver, CO 80201-2391
Club Phone: 303-979-2806
Club Website:
<http://www.rockymtnrrclub.org>

Membership Information

Membership in the Rocky Mountain Railroad Club may be obtained by sending the annual dues to the club address listed above. Regular membership dues are \$25.00. Overseas regular membership dues are \$40.00. A sustaining membership is available by adding \$15.00 to any membership category. An associate membership for spouses and children is also available for \$12.00 per year. Members joining after April may send a payment of \$2.00 for each month remaining in the year. Members of the Rocky Mountain Railroad Club are also members in the Rocky Mountain Railroad Historical Foundation, the non-profit arm of the Rocky Mountain Railroad Club.

Club Officers

President	Mike Gailus
Vice President	Steve Mason
Secretary	Frend John Miner
Treasurer	Frend John Miner

Board Meetings

Members are always welcome to attend any board of directors meeting. They are held on the third week every month. Please call the Club's telephone Information Line at 303-979-2806 or contact any Club officer for the date, time and location.

Newsletter Contributions

Newsletter contributions and items for publication should be sent to:

Bruce Nall, Editor
Rocky Mountain Rail Report
PO Box 620579
Littleton, CO 80162-0579
Fax: 303-978-0402
E-mail: selectimag@aol.com

Christmas Cards Are Available

The RMRRC is offering full color, 5 by 7 inch Christmas Cards featuring the Philip Ronfor painting, "Thunder At Hagerman Trestle," originally commissioned for the cover of the W. Morris Cafky *Colorado Midland* book. The inside greeting is:

Merry Christmas
and a
Happy New Year

A box containing ten cards and eleven envelopes will be available at the November meeting for \$10.00 per box.

Mail and website orders are welcome. Please use the order form in this issue of the *Rail Report* or order online at www.rockymtnrrclub.org. Please add \$4.50 for shipping one box of cards or \$7.00 for shipping up to three boxes.



A doubleheaded westbound Colorado Midland "Utah and California Express" crosses the wooden Hagerman Trestle on the east side of Hagerman Pass. – Philip Ronfor painting.

Foundation Fund Raising

By Jean Gross

Thanks to all those who responded to this year's Rocky Mountain Railroad Historical Foundation fund raising letter. While we still have a way to go before we meet our goal, the response to our request for donations has been very good.

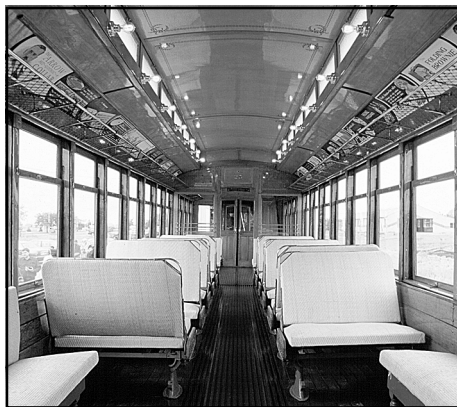
Look for the full report in the December *Rail Report* and enjoy looking at the current progress of the restoration of D&IM No. 25.



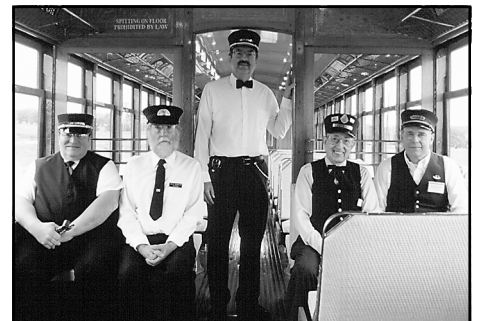
Duane Miller, motorman, guides No. 25.



D&IM No. 25 with the generator "car" in tow operated at the Denver Federal Center during the September 2003 Open House. – Four photos © Bruce Nall.



All the restored seats have been installed.



The crew for the September 2003 Open House was from left, Duane Miller, Carlos Seegmiller, Darrell Arndt, Erwin Chaim and Tom Peyton.

OS Colorado
Current Railroad Happenings
 By Chip Sherman

“OS” are the initials for On the Sheets, a reference to what station agents did to notify the train dispatcher that a train had passed his/her station and been noted on the train register. OS Colorado is a joint effort to note the rail activities occurring in and around Colorado.

BNSF Crawford Hill, NE, Helpers

BNSF manned helpers have been reduced in recent years by using distributed power. One location still using manned locomotives to climb Crawford Hill is Crawford, NE. A visit to this small town on 10/4/03 found these locomotive sets of SD60Ms and fuel tenders (initials BNFT):

9277 in Heritage I scheme, 9218, 9238, 9227, 9211, BNFT 33, 9204.

9229, 9202, BNFT 6, 9207.

9203, BNFT 35, BNFT 37.

9299 Heritage I scheme, 9234.

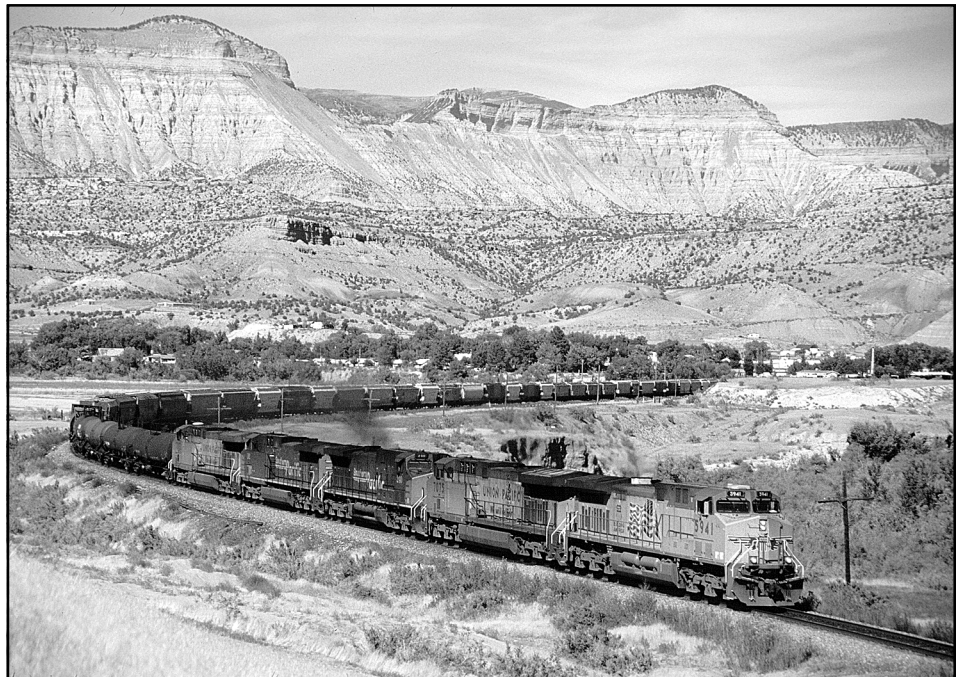
Crawford, NE, is on BNSF’s busy Alliance, NE, to Gillete, WY, double track line that funnels Wyoming Powder River Basin coal trains.

RBB&B Red Unit Circus Train

The Ringling Brothers, Barnum and Bailey (RBB&B) Circus red unit train left Denver, CO, early October 13, 2003 headed east for Omaha, NE, using UP power on BNSF rails. The 133rd Edition was headed for Omaha, NE. It plays there October 15 – 19, 2003. It then continues east on BNSF rails playing Cleveland, OH, October 24 – November 2, 2003. UP power on the train departing Denver was UP SD40-2, 3062, UP 9787 and SD70M 4727. The train moved from UP’s 36th Street Yard to BNSF’s 31st Street Yard. It then moved east on BNSF’s Brush Subdivision. The train ran from Denver to Omaha on BNSF. The animals were unloaded in the early morning, 10/14/03, on the UP tracks near the new Qwest Center near the location where the UP Challenger, 3985, was displayed during River City Roundup. The circus train will



Union Pacific moved a Department of Defense caboose, DODX 900, from Denver to North Platte, NE, on 9/27/03. Train was northbound at Fort Lupton, CO, when photographed. – Photo © Jon Bockelman.



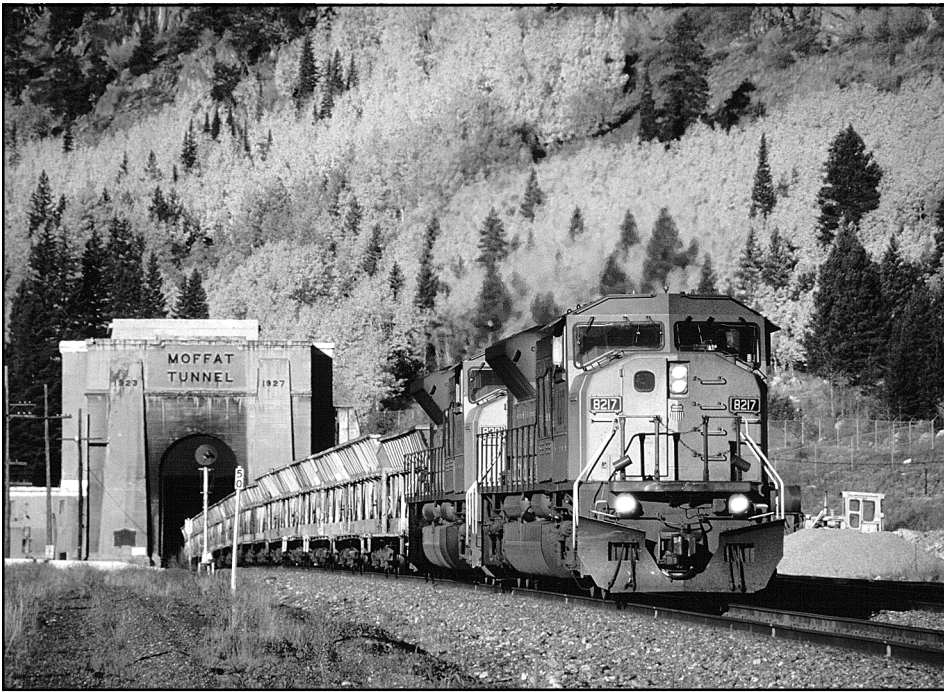
The North Yard, Denver, CO, to Grand Junction, CO, train M NYGJ 19, had UP C44ACCTE 5941 on westbound UP train at DeBeque, CO, on 9/19/03. – Photo © Chip.

leave Omaha, NE, 10/20 on BNSF, headed toward Cleveland, Ohio.

The Greatest Show on Earth was in Denver, CO, playing at the Pepsi Center and the Denver Coliseum October 1 – 12. UP stored the train at UP’s Denver Locomotive Shops. The cars were moved October 12th to 36th street Yard for loading after that last performance.

Rare Unit UPY 105 Visits CO

Union Pacific moved a control car remote control locomotive (CCRCL) into the Denver switch yards in early October 2003. The UPY 105 moved to Denver’s North Yard on October 10, 2003. The unit is now considered an RB30-7B. Originally it was a General Electric model B30-7, part of Southern Pacific’s 102-unit



An empty UP ballast train from Grand Junction, CO, emerged from Moffat Tunnel (East Portal, CO) on 9/28/03 amidst the brilliant aspens above Moffat Tunnel. UP 8217 and 8301 had two V-type with conveyor unit ballast trainsets headed for Cheyenne, WY. – Photo © Chip.

SP/SSW 7774 - 7883 series. The UP's RB30-7B program evolved in July 2003. Only twelve units have emerged to date from the program. The unit was moved to the Denver Locomotive Shops in October.

The idea is that the CCRCL contains the remote control capability while being coupled to another unit not so equipped. This allows other units that have not been equipped with RCL to be capable of being remotely controlled.

The CCRCL is basically a trailer – the units converted are GE B23-7 & B30-7s that have had their traction motors and fuel tanks removed. Reportedly their prime movers are still in place (the exhaust stack is still there as well). The numbering starts with UPY 105. They are painted grey with red Scotchlight frame stripes and cab numbers. Red barricade stripes are at the lower portions of the nose and rear of the hood. There is a UP shield at the top of the nose. The cab roof has twin yellow beacons on either side. Cab windows, except for door and side windows, are painted over. Control stand apparatus is removed and plated over but the cabinet is in place along with emergency air brake. The remote control

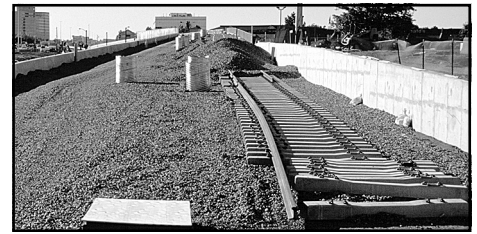
electronics/cabinet is located on the back of the cab.

Model Changes, Retired to Switch:
 SP 7784 from RB30-7B to CCRCL (UPY 105) on 7/8/03
 SP 7782 from RB30-7B to CCRCL (UPY 106) on 7/8/03
 SP 7837 from RB30-7B to CCRCL (UPY 107) on 7/8/03
 SP 7790 from RB30-7B to CCRCL (UPY 108) on 7/23/03
 UP 210 from RB30-7A to CCRCL (UPY 109) on 7/23/03
 UP 212 from RB30-7A to CCRCL (UPY 110) on 7/23/03

Roster info courtesy of Don Strack. Visit his site (July 2003 UP Roster changes) <http://www.trainweb.org/utahrails/up/3gupr.html>
 –Sean Graham-White

Skyline Mine, Utah, Closing in 2004

I caught a UP coal empty headed up the Pleasant Valley Sub to the Skyline Mine in Utah on 9/27/03. The third week of September is typically the “golden week” of brilliant aspens found along much of the right of way. Unfortunately, Skyline



Denver's Regional Transportation District Southeast Line between South Broadway and the Denver Tech Center will open late fall 2006. The first tracks laid were between East Bellevue Avenue and East Orchard Road in mid-September 2003. View looks south toward the East Bellevue Avenue overpass. Denver Tech Center at left. – Photo © Chip.

mine faces a bleak future right now. Canyon Fuel Company announced last May that the mine would close in 2004, possibly next April.

This closure would lay off 215 employees at a mine that produced 3.5 million tons of coal in 2002. Apparently the soft coal market is to blame. St. Louis based Arch Coal will keep the mine closed until economic conditions improve. Skyline and other Utah mines once exported more than 3 million tons per year to markets in Japan. Most of Skyline's customers today are found in the Midwest and Eastern US.

Transportation costs are making it difficult for Skyline to compete in the coal market. Another expense facing Skyline is the \$500,000 cost per month just to remove water from the mine.

–James Belmont

Leased SD70M Price Down

Railway Age Magazine (October 2003 issue) reported that Union Pacific (UP) secured leases in 2003 for EMD's new SD-70Ms delivered in 2003 at the rate of less than \$200 per unit per day. This is a record low for locomotive leases. UP had paid over \$250 per day for earlier SD-70s. The model cost \$1.4 million when purchased new.

Utah Railway in the mid-80s leased those National Railway Equipment (NRE) ex-Southern Pacific SD45s and BN F45s for \$90/day, and that included maintenance. It is amazing how cheap you can lease a locomotive now.

Photo Contest – Member Winner – David M. Henker



UP #5933 was photographed west bound, East of Rock River Wyoming – east of mp 605 on the Overland Route. The photograph was taken late in the afternoon on March 8, 2003. The equipment was a Minolta Maxxum 5, a Sigma 28-105mm Aspherical lens, and was exposed on Provia 100F. The Slide Printer printed the enlargement. I would like to thank my friend “Foamer Phil” for driving that day, and turning around on the way home so I could photograph this fine looking locomotive and company. – Photo © David M. Henker.

Photo Contest Winners

By Steve Mason

The Board of Directors and guests judged the entries for the photo contest. There were member and nonmember categories. The winning member will receive a video copy of Otto Perry’s *Rio Grande San Juan Express* and the nonmember winner will receive a RMRRRC membership.

After much agonizing and flipping back and forth between photos like John Madden’s football chalk talks, the board selected Dave Henker’s Union Pacific photo of a solid train of AirSlide hoppers at Rock River, Wyoming. Norm Havran’s digital image of Rio Grande Southern Goose #5 at Dolores, CO was the nonmember winner. Congratulations!



Locomotive 20 as “Emma Sweeny,” painted for the 1950 movie, *Ticket To Tomahawk*. – Photo from the Colorado Railroad Museum collection, reproduced with permission.

Photo Contest – Non Member Winner – Norm Havran



RGS Goose #5 at Dolores, Colorado, on May 26, 2003. – Photo © Norm Havran.

**Trains Unlimited Tours And
Rocky Mountain Railroad Club
Rio Grande Photo Freight**

Story and Photo by Kneadmor Fotoes

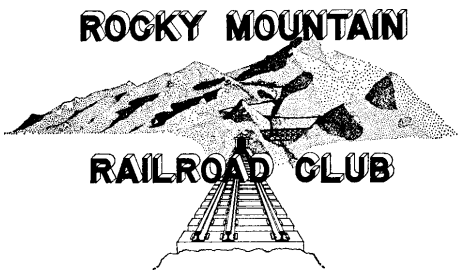
This combined effort event had twenty-seven Club participants traveling at a discount and creating a generous donation to the Club by Chris Skow, President of Trains Unlimited Tours. The trip ran the gamut of melancholy to glorious. Departing from Chama on a beautiful fall day, the state of the railroad with five locomotives out of service, some well apart, was a sad sight. The fall colors, beautiful and abundant, added to the pictures.

The photo lines were well managed by Chris and we all worked together at the

Continued on Page 8, Column 1



C&TS RR Extra 487 East at Cascade Creek Trestle on October 9, 2003.



BOX 2391
DENVER, COLORADO 80201

FIRST CLASS

FIRST CLASS MAIL
U. S. Postage
PAID
Denver, Colorado
Permit No. 1873

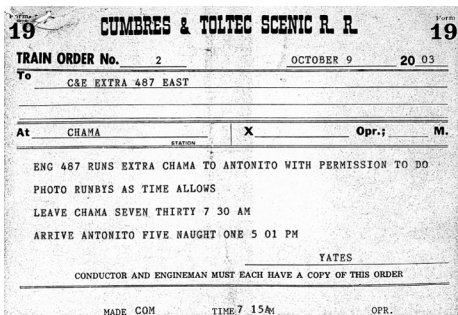


Rio Grande Photo Freight

Continued From Page 7, Column 1

tight shooting spots. A good variety of photo stops seemed to please all. Chris arranged for meal stops at Osier where the Cumbres regular caterer operates, a pleasant surprise. Along the way water, pop, and snacks were also available.

After overnight in Antonito, the return trip was often chilly, drizzly and overcast. Overcast with no shadows can be good for photographs. It was interesting meeting people from all over the country. Visitors from Great Britain and Texas were aboard. I highly recommend this trip.



Colorado Railroad Museum 2003 Scheduled Operations

For information call 303-279-4591

Santa Specials: December 6-7 and 13-14

Intermountain Chapter, NRHS 2003 Event Schedule

For information call 303-298-0377

November 10: Annual Banquet at the Indian Tree Golf Course, Arvada. | December 19: Our holiday get together at Rossi's.

Trains Unlimited, Tours 2004 Trip Schedule

For TUT information call 1-800-359-4870

or visit our web page at: www.trainsunlimitedtours.com/rmrrc/

April 15-18	Domes To Reno	August 7-9	Pacific Coast Domes
April 22-May 6	Great Canadian Rail Adventure	Aug. 19-Sept. 2	Great Peruvian Rail Adventure
April 26-May 3	Canadian Steam	August 27-29	Domes To Feather River RR Days
May 1-2	Caribou Express	Sept. 19-Oct. 2	China Steam Spectacular
May 15	McCloud Steam	Sept. 27-28	Rio Grande Photo Freight
June 10-20	Alaskan Railfan Adventure	Sept. 29	Durango Photo Special
June 10-13	White Pass Steam	October 2-3	Nevada Northern
July 2-8	Domes To The Pacific Northwest	October 2-9	New England Fall Colors
July 4	Domes To Canada	Oct. 28-Nov. 12	The Old Patagonian Express
July 6	Stampede Pass Rail Adventure	November 11-17	Mexican Copper Canyon